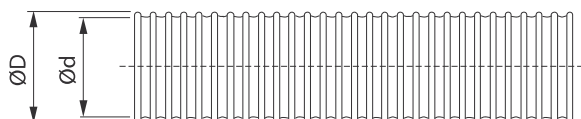


Flexible ducts

FLX-HDPE/FLX-HDPE-A



Dimensions



Description

Flexible ducts FLX-HDPE and FLX-HDPE-A are used to distribute air. Comparatively small diameters allow to hide the installation in ceilings, screeding, or suspended ceiling. Moreover, the FLX-HDPE-A-75 duct interior has an antistatic, antibacterial and antimold coating which use silver oxide ions as a base.

Flexible ducts FLX-HDPE and FLX-HDPE-A are press fit with the rest of the installation components. Washers at the connection points guarantee a good system seal.

Flexible ducts FLX-HDPE and FLX-HDPE-A are made of high-impact polyethylene. This results in very high mechanical resistance of the entire system.

Duct interior surface is smooth, which leads to low pressure losses in the installation.

Ducts are wound in 50 m rings.

Ring dimensions: 1100cm x 40cm.

Example

Product code **FLX - HDPE - 75**

type

material

diameter



code	$\varnothing D$ nom [mm]	$\varnothing d$ [mm]	weight [kg/m]
FLX-HDPE-75	75	63	0,31
FLX-HDPE-A-75	75	63	0,31
FLX-HDPE-90	90	75	0,42
FLX-HDPE-A-90	90	75	0,42

Also available in 160mm and 200mm diameters

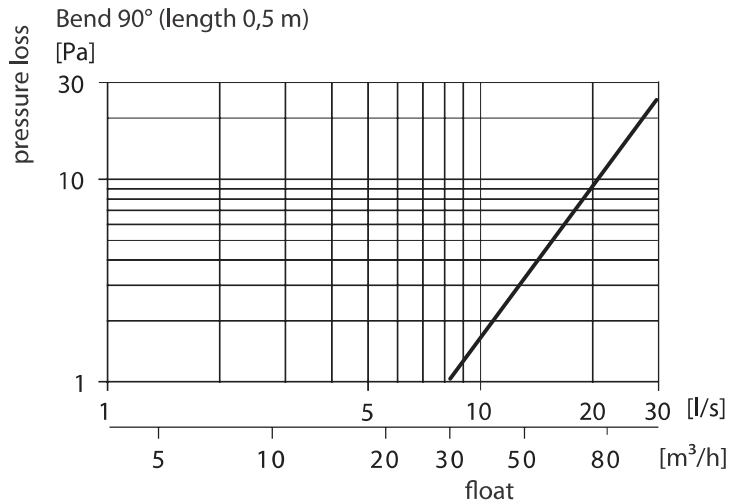
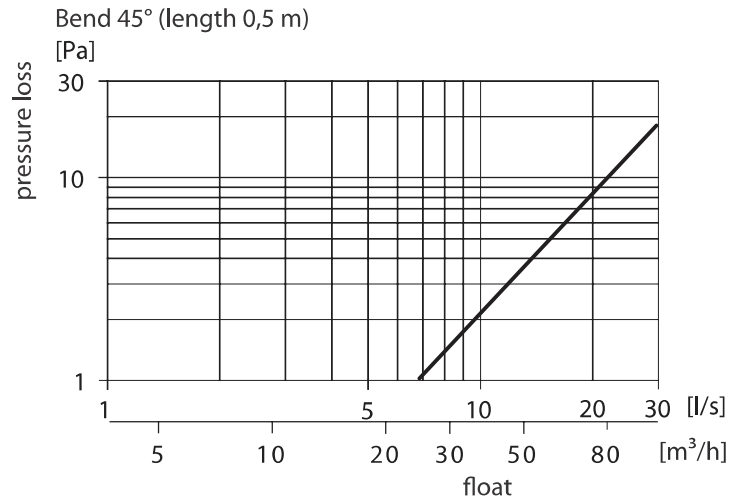
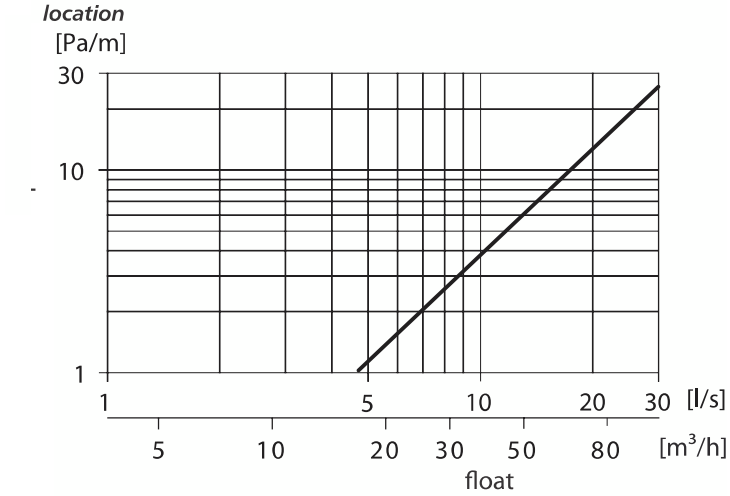
Flexible air distribution system

Flexible ducts

FLX-HDPE/FLX-HDPE-A

Technical Data

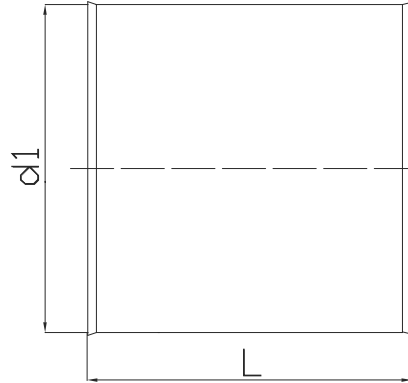
Selection charts for 75mm of diameters



Sleeve couplings FLX-MSF...



Dimensions



Description

FLX-MSF sleeve coupling is used to connect FLX-HDPE or FLX-HDPE-A ducts.
To preserve the tightness class C it is recommended to use gasket FLX-USZ or FLX-USC.

Example

Product code: **FLX-MSF - 75**

type _____
diameter _____

<i>code</i>	<i>d1</i> [mm]	<i>L</i> [mm]
FLX-MSF-63	63	100
FLX-MSF-75	75	100
FLX-MSF-90	90	100

Gaskets FLX-USZ...



Description

Gaskets are used for elements of the FLX-REKU cable connections FLX-HDPE to other system components such plenum boxes, female coupling, take-offs, dampers.

FLX-USZ-75 / FLX-USZ-90 - made of EPDM rubber is used for sealing the two ducts and female coupling - provides tightness class C acc. BS EN 12237.

FLX-USP-75 / FLX-USP-90 - made of foam and nozzle is mounted inside the take-offs of plenum boxes and dampers. It is used to seal the box with duct - provides tightness class B acc. BS EN 12237.

FLX-USC-75 / FLX-USC-90 - made of EPDM rubber and is mounted on the ends of the duct FLX-HDPE. It is used to seal the duct with plenum box, damper - provides tightness class C acc. BS EN 12237.

FLX-UST-75 / FLX-UST-90 - seal shrink tubing, used to connect and seal two ducts or duct and plenum box.

Example

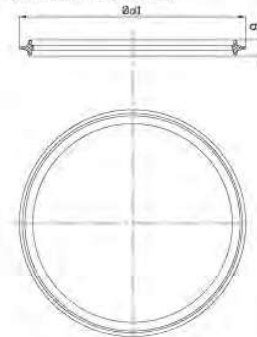
Product code: **FLX-USZ - 75**

type _____
diameter _____

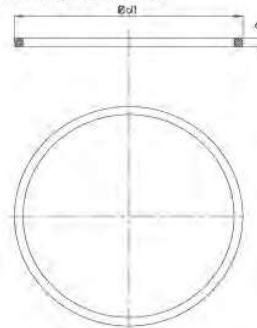
<i>kod</i>	<i>d1</i> [mm]	<i>g</i> [mm]
FLX-USZ-75	78	8
FLX-USP-75	75	6
FLX-USC-75	77	3
FLX-UST-75	75	100
FLX-USZ-90	93	8
FLX-USP-90	90	6
FLX-USC-90	92	3
FLX-UST-90	90	100

Dimensions

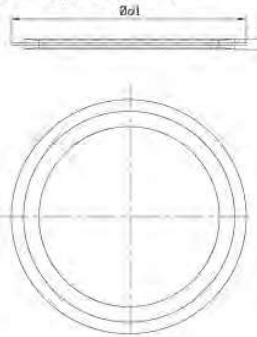
FLX-USZ-63/FLX-USZ-75/FLX-USZ-90



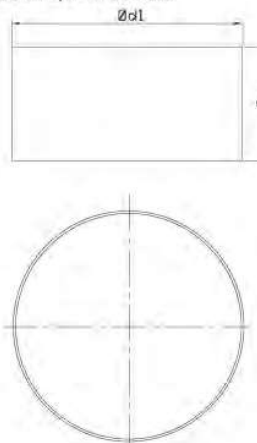
FLX-USP-63/FLX-USP-75/FLX-USP-90



FLX-USC-63/FLX-USC-75/FLX-USC-90



FLX-UST-63/FLX-UST-75/FLX-UST-90



Gaskets

FLX-USZ...



Description

Gaskets are used for elements of the FLX-REKU cable connections FLX-HDPE to other system components such plenum boxes, female coupling, take-offs, dampers.

FLX-USZ-75 / FLX-USZ-90 - made of EPDM rubber is used for sealing the two ducts and female coupling - provides tightness class C acc. BS EN 12237.

FLX-USP-75 / FLX-USP-90 - made of foam and nozzle is mounted inside the take-offs of plenum boxes and dampers. It is used to seal the box with duct - provides tightness class B acc. BS EN 12237.

FLX-USC-75 / FLX-USC-90 - made of EPDM rubber and is mounted on the ends of the duct FLX-HDPE. It is used to seal the duct with plenum box, damper - provides tightness class C acc. BS EN 12237.

FLX-UST-75 / FLX-UST-90 - seal shrink tubing, used to connect and seal two ducts or duct and plenum box.

Example

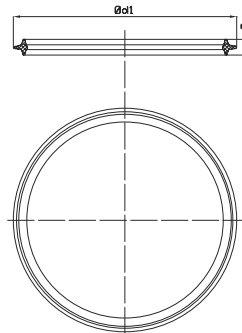
Product code: **FLX-USZ - 75**

type _____
 diameter _____

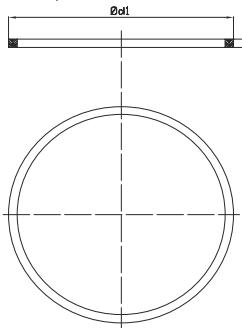
<i>kod</i>	<i>d1</i> [mm]	<i>g</i> [mm]
FLX-USZ-75	78	8
FLX-USP-75	75	6
FLX-USC-75	77	3
FLX-UST-75	75	100
FLX-USZ-90	93	8
FLX-USP-90	90	6
FLX-USC-90	92	3
FLX-UST-90	90	100

Dimensions

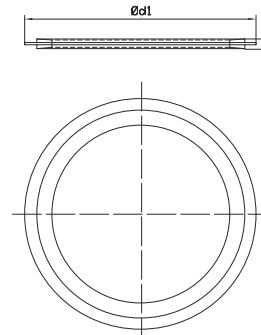
FLX-USZ-63/FLX-USZ-75/FLX-USZ-90



FLX-USP-63/FLX-USP-75/FLX-USP-90



FLX-USC-63/FLX-USC-75/FLX-USC-90



FLX-UST-63/FLX-UST-75/FLX-UST-90

