



**OWNER'S
MAINTENANCE
AND ADJUSTMENT
GUIDELINES**

WINDOWS - STANDARD HINGES

October 2020

Recommended Maintenance Schedule For VETTA Windows

General Guidelines

Regular cleaning and maintenance will help to keep the beauty and prolong the functionality of your windows. Adjust your windows as required.

Salt and other corrosive or abrasive materials must not be allowed to build up on the exterior surfaces or components. Any damage to the exterior surfaces, such as scratches, chips or abrasions can result in corrosion and should be repaired.

*At no time should a pressure washer be used to clean the windows or screens.

Cleaning Glass

- **As required**

Use a mild, ph-neutral cleaning product with a clean soft cloth and/or squeegee. Outside reflexive surfaces must not be cleaned with any caustic or alkaline substances or cleaning powders, as they will damage the surface.

Cleaning, Maintaining and Lubricating Hardware

- **Once a year**

If necessary, tighten any loose screws and replace any defective parts.

Lubrication: (See below for instructions)

For difficult to operate units, it is most likely a hardware adjustment issue. Please consult the diagrams below for adjustments. If you continue to have problems, contact us and we will be happy to give you some guidance.

Cleaning Wood Frames and Aluminum Cladding

- **Twice a year, preferably spring and fall**

During cleaning the outdoor temperature should not exceed 25°C.

Aluminum surfaces should be thoroughly cleaned using a mild or slightly alkaline cleaning product and warm water (not hot). Remove any buildup around the silicone seal at the perimeter of the glass.

Immediately wipe the surface with clean, cold water. Then dry thoroughly.

Wood frames can be cleaned with a soft cloth which is slightly damp with water. Dry with a soft cloth.

Avoid abrasive cleaners or pads as these can damage the finish on the aluminum or wood.

Cleaning the Window Threshold

- **As required**

Keep dirt and debris off the window threshold, as this can damage the weather stripping. Vacuum excess material from the window threshold as needed, and wipe clean with a damp rag.

Cleaning and Maintaining Gaskets

- **Once a year**

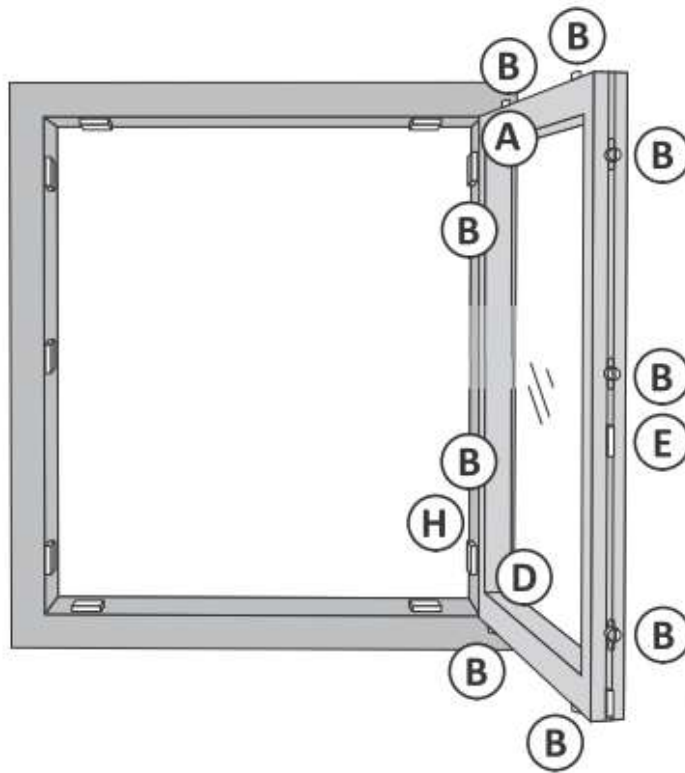
Clean gaskets will ensure that the sash seals tightly to the frame. Using mild soap and warm water (not hot), clean the gaskets and dry thoroughly. You can re-dress the gaskets with a silicone spray, but be sure to apply this to the rag rather than the gasket directly, as any overspray can affect the finish. Gaskets should be replaced if damaged.

Cleaning Screens

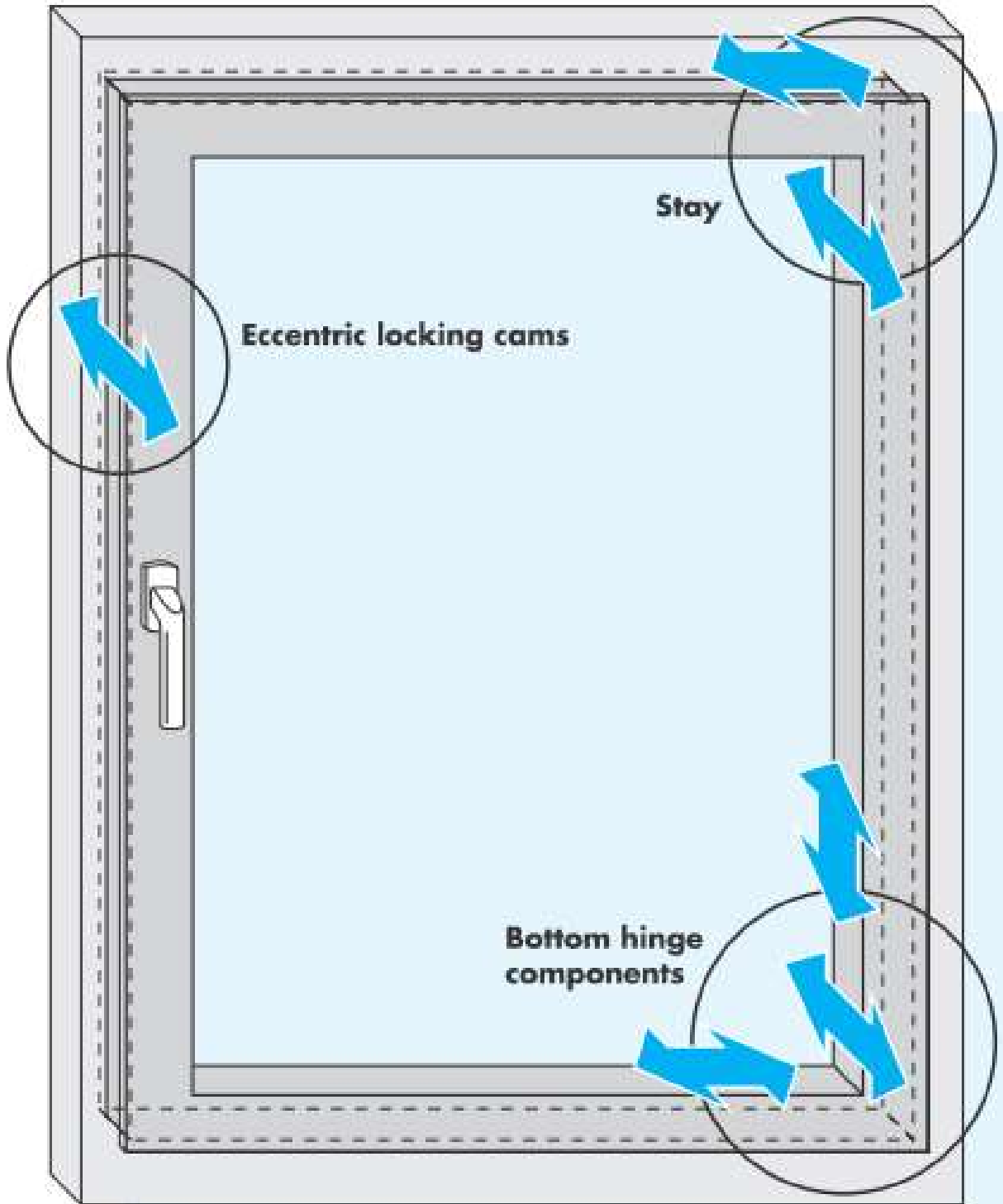
- **As required**

When required, carefully wash the mesh and wipe down edges using a mild soap with water and a soft cloth. Rinse with water and dry. For a thorough clean, remove the screens before cleaning.

Making Adjustments

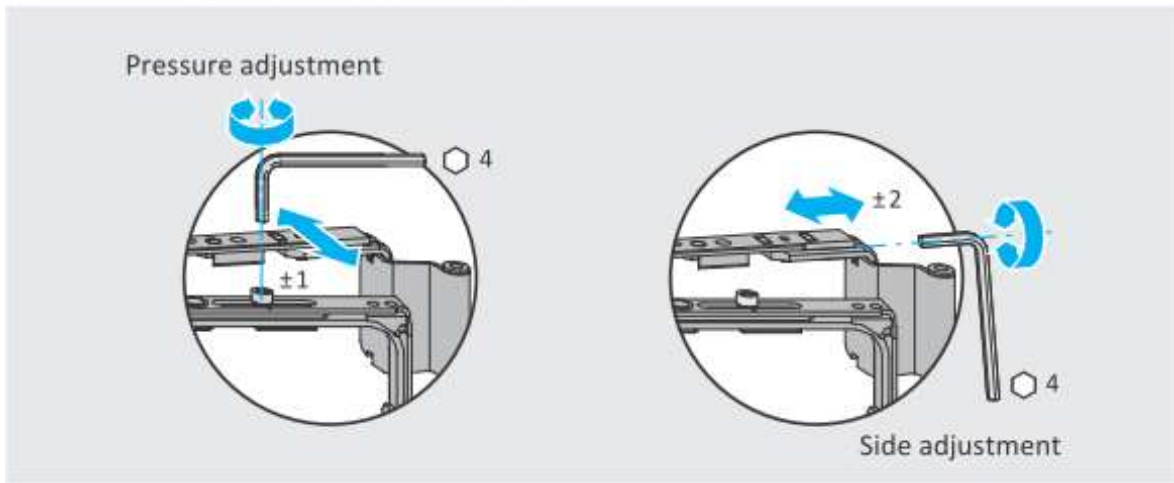


- A** Stay and top hinge (Regulates the angle of the sash and the pressure on the frame)
- B** Locking point (Regulates the pressure on the frame and adjusts the ease of operation of the handle)
- D** 1. Bottom Frame Hinge (Regulates left and right movement and pressure on the frame)
2. Bottom Sash Hinge (Regulates the height of the sash)
- E** Door Snapper (An option for **balcony doors only** without an external handle)
- H** Load transfer (Adjustments on **hidden hinges only** - this adjusts the height and the load of the sash)



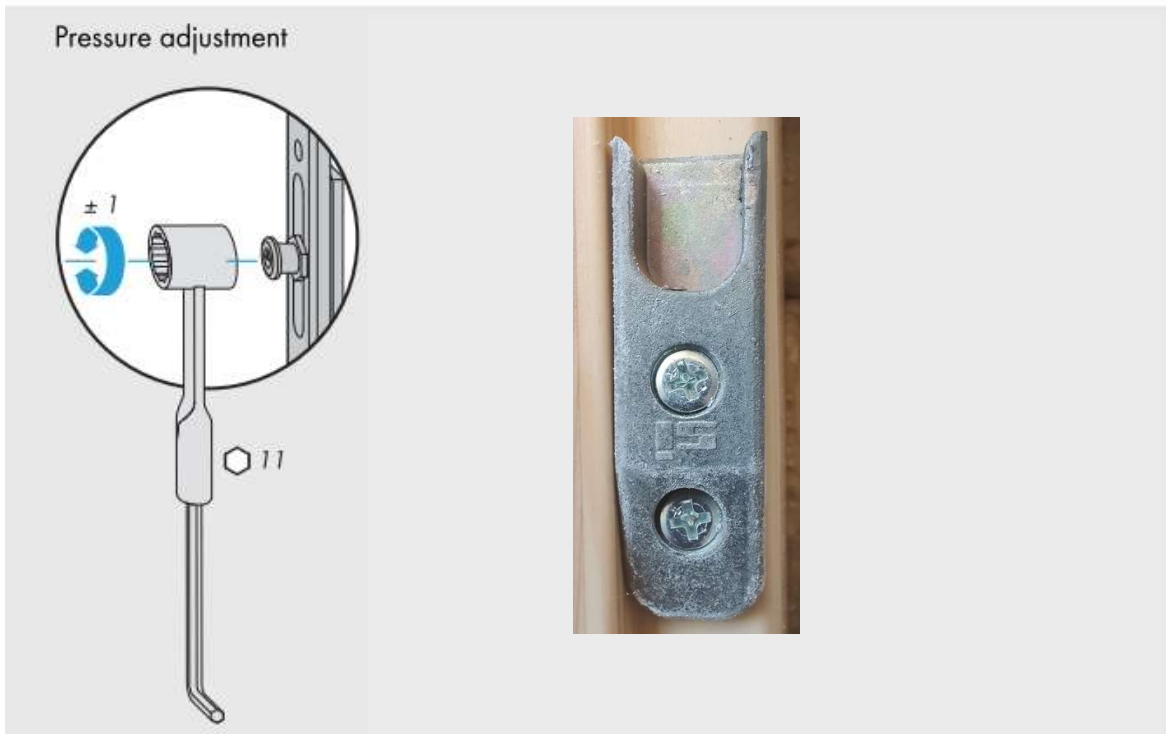
A Stay **Standard Hinge**

TITAN iP, AF - Hinge side TITAN/Si-line



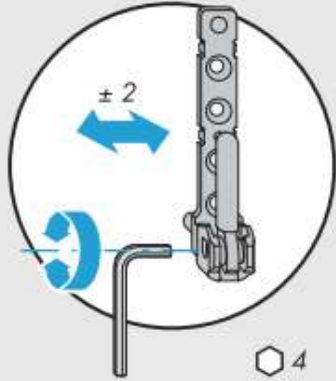
B Locking point

TITAN iP, AF - comfort mushrooms



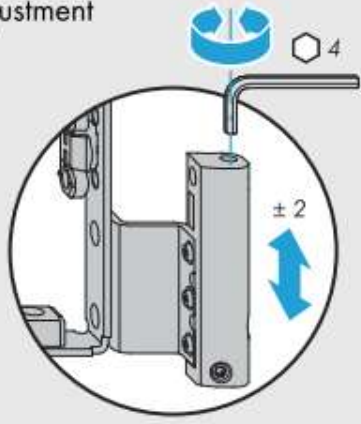
D 1. Bottom Frame Hinge

Side adjustment

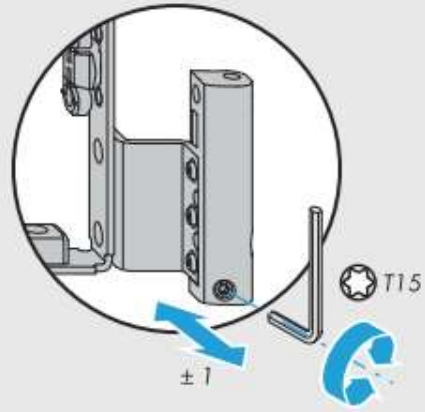


2. Bottom Sash Hinge

Height adjustment

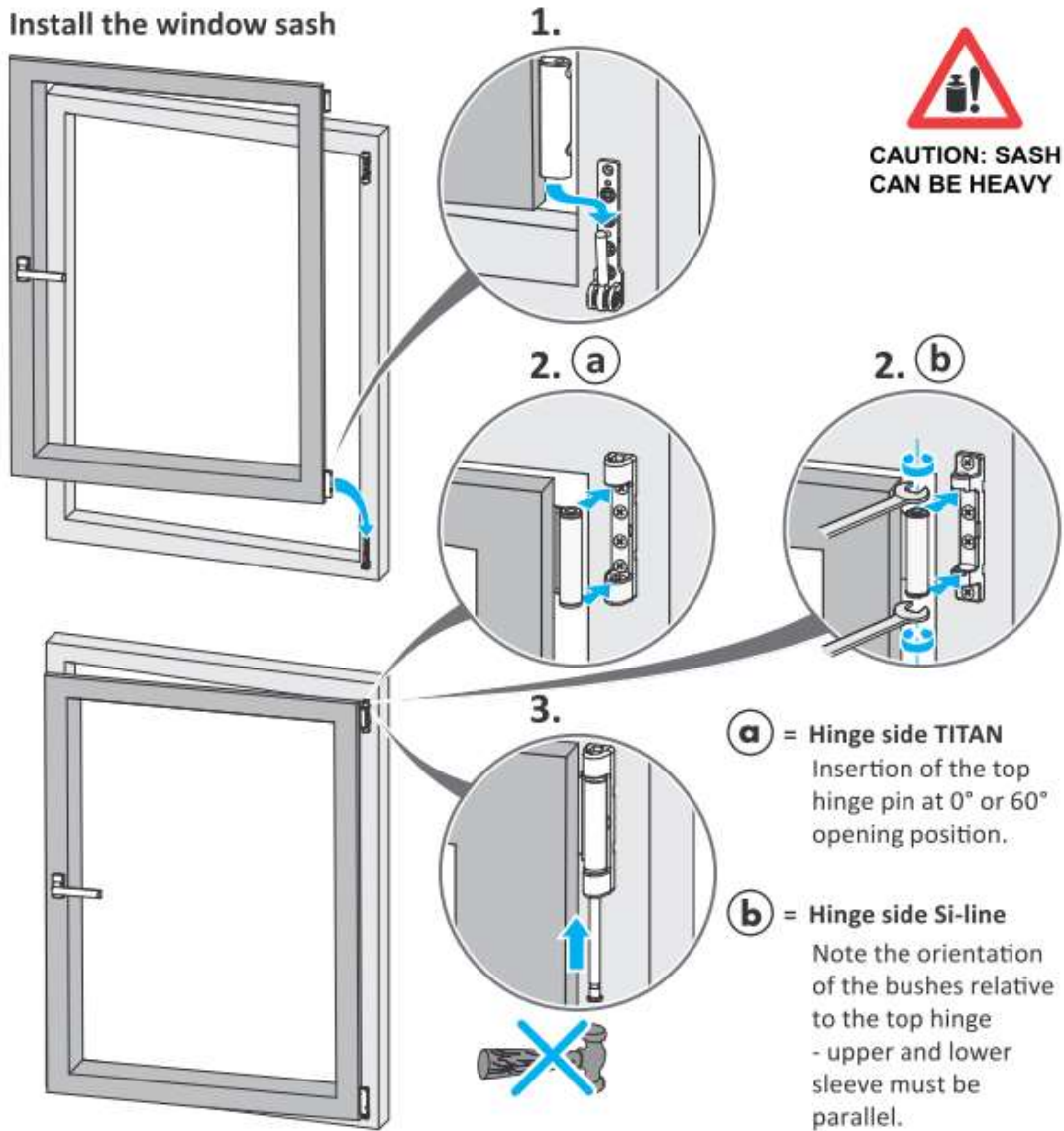


Pressure adjustment



Installing and Removing the Window Sash

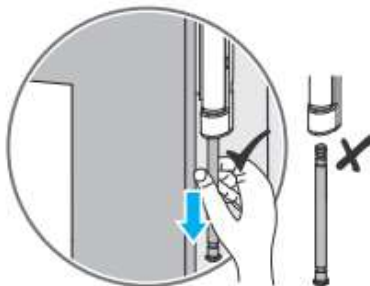
Install the window sash



Remove the window sash

Remove it in the reverse order.

Please note:



Lubrication of Your Siegenia Hardware

To ensure smooth and trouble free operation of your hardware you must carry out the following maintenance at least once a year.

1. Lubricate or oil all moving parts and locking points (👉).
2. Use **only** clean and non-resinous grease or oil (i.e. 3in1).
3. Check all important security components (🔍) for loose connections and wear. If necessary, tighten any loose screws and replace any defective parts.

