

Female coupling made of EPP

# EPP-MSF



## Description

Female coupling made of expanded polypropylene (EPP) for connecting ducts and fittings. The coupling is used to connect all elements of the EPP duct system: duct+duct, duct+fitting, fitting+fitting.

The female couplings are produced in the following diameters: 125, 150, 160 and 180mm.

Thermal conductivity: 0.039 W / m \* K  
Airtightness class: C  
Surface roughness: 0.077 mm

### Available materials:

EPP-MSF-....- EPP (expanded polypropylene)

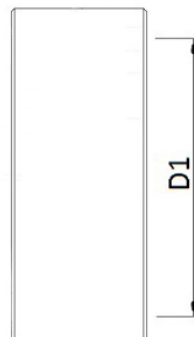
### Example of marking:

Product code: EPP-MSF - aaa

type

diameter Ød<sub>1</sub>

## Dimensions



Product code	Diameter [mm]	Wall thickness [mm]
EPP-MSF-125	125	15
EPP-MSF-150	150	15
EPP-MSF-160	160	15
EPP-MSF-180	180	15

## Assembly method

