

## Distribution box for FLX-REKU system

# FLX-PLO-R / FLX-PRO-R



### Description

The FLX-PLO-R / FLX-PRO-R distribution boxes (manifolds) are used to run the domestic ventilation ductwork to each individual room. As a rule, one air distribution box with a proper amount of FLX duct connection spigots is installed in the supply and exhaust air. However, the number of air distribution boxes depends on the building design. The  $\varnothing d_1$  connection spigot is used to connect the main supply or exhaust duct from the heat recovery unit. FLX-HDPE / FLX-HDPE-A ducting is connected to  $\varnothing d_2$  connection spigots.

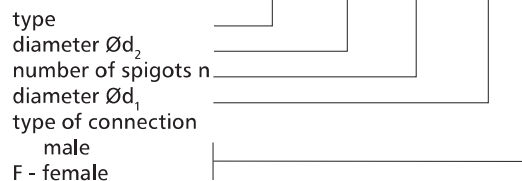
FLX-PLO-R / FLX-PRO-R distribution boxes are made of galvanized steel sheet. Air distribution boxes made from stainless steel are available on request.

Available also insulated distribution box version - FLX-PLI-R / FLX-PRI-R. These distribution boxes have inside an insulation lining made from 9 mm thick rubber foam.

FLX-PLO-R distribution boxes are equipped with duct connection spigots  $\varnothing d_2$  with an EPDM seal – this type of connection with FLX-HDPE ducting is airtight and easy to install.

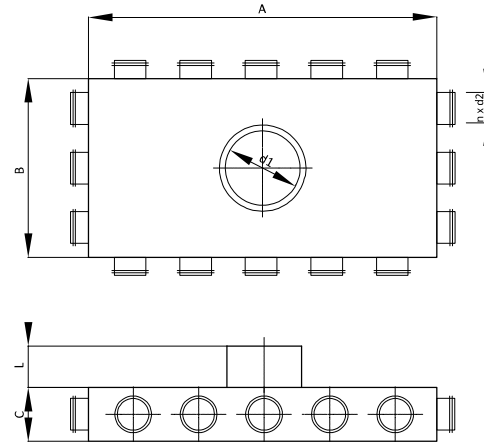
#### Product code example

Product code: **FLX-PLO-R - 75 - 2-4-2-0 - 160 - F**



### Dimensions

An example of a technical drawing of FLX-PLO-R-75-3-5-3-5-d1 distribution box



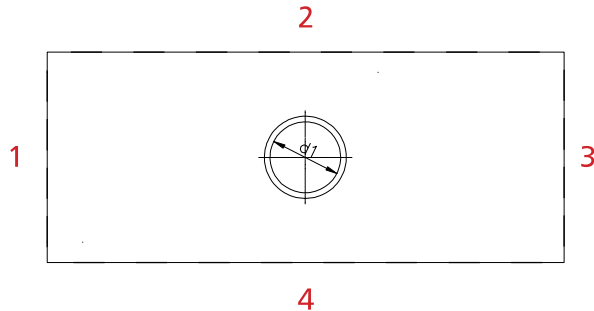
Product code	A [mm]	B [mm]	C [mm]	L [mm]	$d_1$ [mm]	n [pcs.]	$d_2$ [mm]
FLX-PRO-R-63-2-4-2-0-d1	360	180	75	60	80-250	8	63
FLX-PRO-R-63-0-3-0-3-d1	270	270	75	60	80-250	6	63
FLX-PRO-R-63-0-4-0-4-d1	360	360	75	60	80-250	8	63
FLX-PRO-R-63-3-6-3-0-d1	540	270	75	60	80-250	12	63
FLX-PRO-R-63-0-5-0-5-d1	450	450	75	60	80-250	10	63
FLX-PRO-R-63-0-7-0-7-d1	630	280	75	60	80-250	14	63
FLX-PRO-R-63-3-5-3-5-d1	450	270	75	60	80-250	16	63
FLX-PRO-R-63-3-6-3-6-d1	540	270	75	60	80-250	18	63
FLX-PLO-R-75-2-4-2-0-d1	400	200	90	60	80-250	8	63
FLX-PLO-R-75-0-3-0-3-d1	300	300	90	60	80-250	6	63
FLX-PLO-R-75-0-4-0-4-d1	400	300	90	60	80-250	8	63
FLX-PLO-R-75-3-6-3-0-d1	600	300	90	60	80-250	12	63
FLX-PLO-R-75-0-5-0-5-d1	500	300	90	60	80-250	10	63
FLX-PLO-R-75-0-7-0-7-d1	700	300	90	60	80-250	14	63
FLX-PLO-R-75-3-5-3-5-d1	500	300	90	60	80-250	16	63
FLX-PLO-R-75-3-6-3-6-d1	600	300	90	60	80-250	18	63
FLX-PLO-R-90-2-4-2-0-d1	400	200	110	60	80-250	8	75
FLX-PLO-R-90-0-3-0-3-d1	300	300	110	60	80-250	6	75
FLX-PLO-R-90-0-4-0-4-d1	400	300	110	60	80-250	8	75
FLX-PLO-R-90-3-6-3-0-d1	600	300	110	60	80-250	12	75
FLX-PLO-R-90-0-5-0-5-d1	500	300	110	60	80-250	10	75
FLX-PLO-R-90-0-7-0-7-d1	700	300	110	60	80-250	14	75
FLX-PLO-R-90-3-5-3-5-d1	500	300	110	60	80-250	16	75
FLX-PLO-R-90-3-6-3-6-d1	600	300	110	60	80-250	18	75

## Distribution box for FLX-REKU system

# FLX-PLO-R / FLX-PRO-R

### How to order

Product code: FLX-PLO-R- $\varnothing d_2$ -1-2-3-4- $\varnothing d_1$



where:

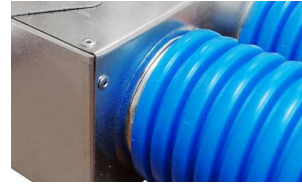
- type FLX-PLO
- $\varnothing d_2$  FLX-HDPE-50 duct connection spigot ( $\varnothing 50$  mm)
- 1-2-3-4 number and configuration of connection spigots
- $\varnothing d_1$  80,100,125,150,160,180,200,250 mm SPIRAL duct diameter
- Z no connection spigots, DIY solution = cutting at the construction site
- F female connection / no symbol = male connection

Choose distribution box according to number of spigots:

FLX-HDPE $\varnothing$ [mm]	No. of FLX duct connection spigots n [pcs.]	Product code of distribution box
63	6	FLX-PRO-R-63-0-3-0-3-d1
	8	FLX-PRO-R-63-2-4-2-0-d1
	8	FLX-PRO-R-63-0-4-0-4-d1
	9	FLX-PRO-R-63-3-6-3-0-d1
	10	FLX-PRO-R-63-0-5-0-5-d1
	14	FLX-PRO-R-63-0-7-0-7-d1
	16	FLX-PRO-R-63-3-5-3-5-d1
	18	FLX-PRO-R-63-3-6-3-6-d1
75	6	FLX-PLO-R-75-0-3-0-3-d1
	8	FLX-PLO-R-75-2-4-2-0-d1
	8	FLX-PLO-R-75-0-4-0-4-d1
	9	FLX-PLO-R-75-3-6-3-0-d1
	10	FLX-PLO-R-75-0-5-0-5-d1
	14	FLX-PLO-R-75-0-7-0-7-d1
	16	FLX-PLO-R-75-3-5-3-5-d1
	18	FLX-PLO-R-75-3-6-3-6-d1
90	6	FLX-PLO-R-90-0-3-0-3-d1
	8	FLX-PLO-R-90-2-4-2-0-d1
	8	FLX-PLO-R-90-0-4-0-4-d1
	9	FLX-PLO-R-90-3-6-3-0-d1
	10	FLX-PLO-R-90-0-5-0-5-d1
	14	FLX-PLO-R-90-0-7-0-7-d1
	16	FLX-PLO-R-90-3-5-3-5-d1
	18	FLX-PLO-R-90-3-6-3-6-d1

### Types of plenum boxes

FLX-PLO plenum box



FLX-PRO plenum box (spigot - 63mm only)



FLX-PLO-75-2-160 male connection spigot  $\varnothing d_1$  with a seal



FLX-PLO-75-2-160-F female connection spigot  $\varnothing d_1$



On request, plenum boxes can be supplied with additional safety clips, that secure the semi-rigid duct in the place and protect it from disconnecting: FLX-PLO-75-...-H



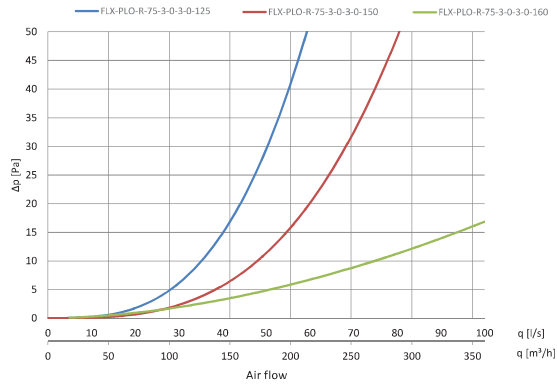
# Distribution box for FLX-REKU system

# FLX-PLO-R / FLX-PRO-R

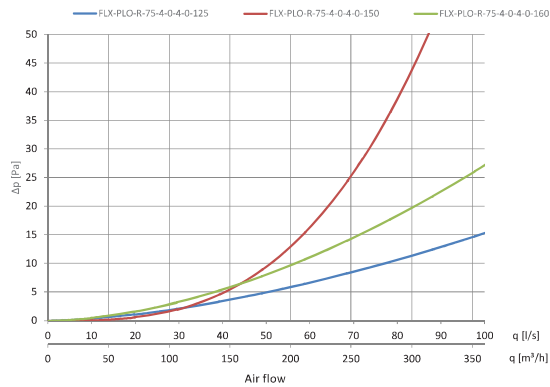
## Technical data

Pressure drop charts for supply air distribution boxes:

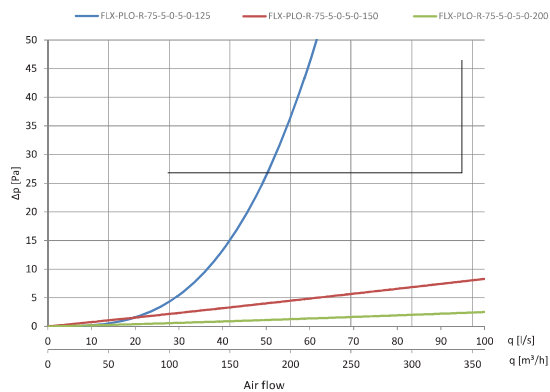
FLX-PLO-R-75-3-0-3-0-d1



FLX-PLO-R-75-4-0-4-0-d1

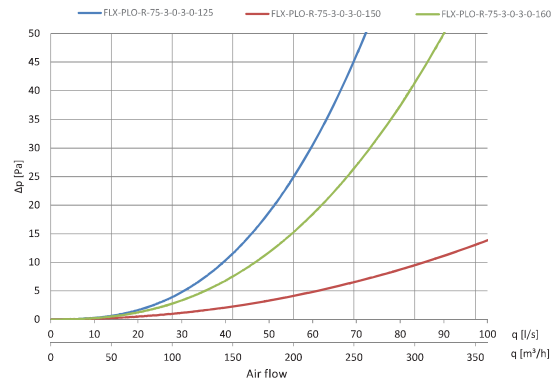


FLX-PLO-R-75-5-0-5-0-d1

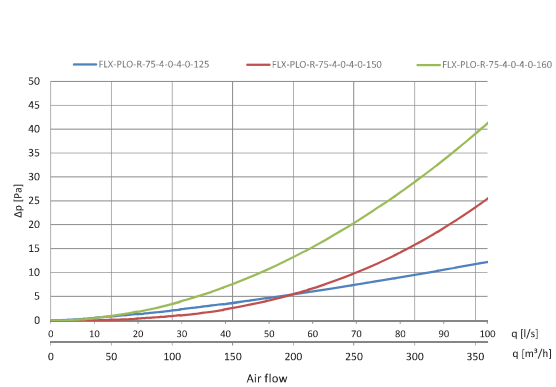


Pressure drop charts for exhaust air distribution boxes:

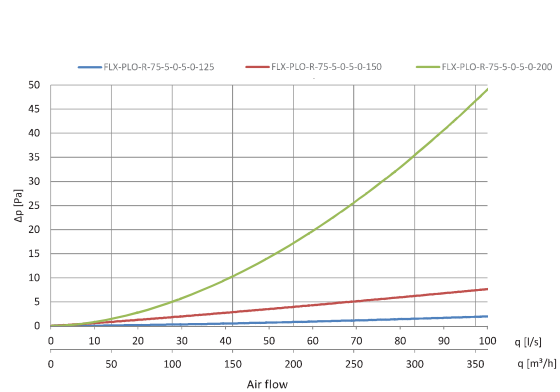
FLX-PLO-R-75-3-0-3-0-d1



FLX-PLO-R-75-4-0-4-0-d1



FLX-PLO-R-75-5-0-5-0-d1



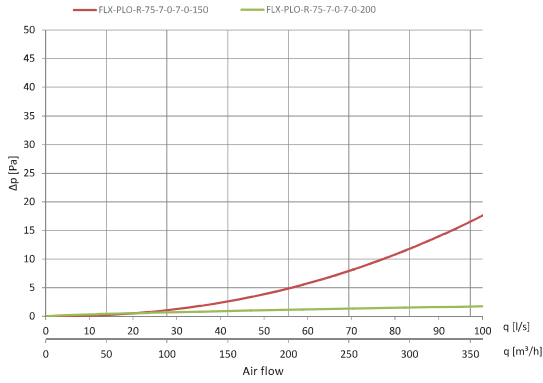
# Distribution box for FLX-REKU system

# FLX-PLO-R / FLX-PRO-R

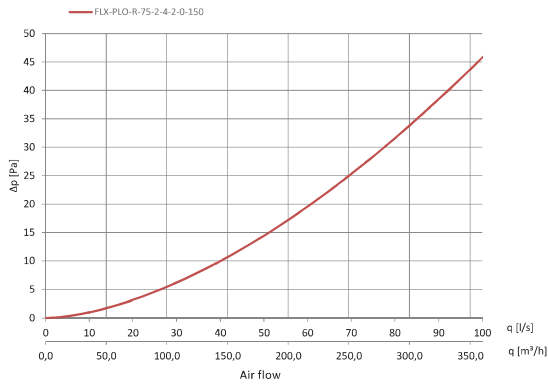
## Technical data

Pressure drop charts for supply air distribution boxes:

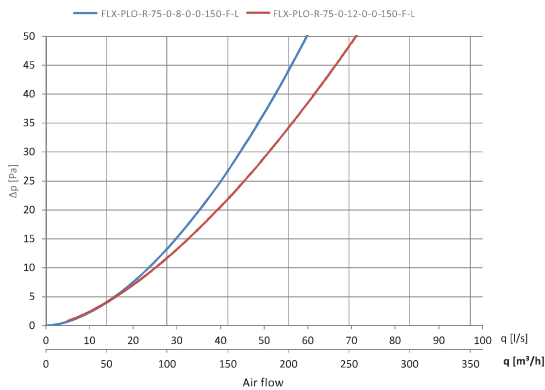
**FLX-PLO-R-75-7-0-7-0-d1**



**FLX-PLO-R-75-2-4-2-0-d1**

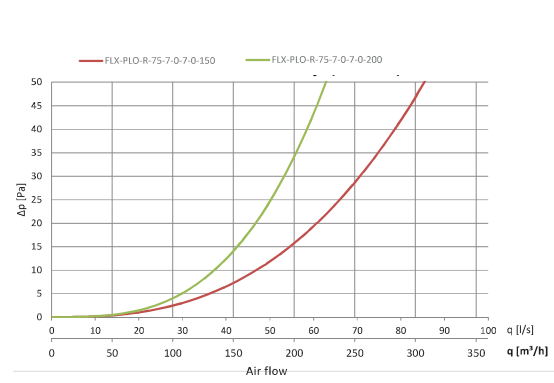


**FLX-PLO-R-75-0-8-0-0-150-F-L / FLX-PLO-R-75-0-12-0-0-150-F-L**

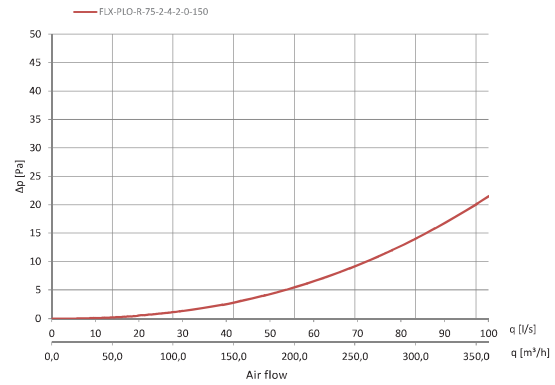


Pressure drop charts for exhaust air distribution boxes:

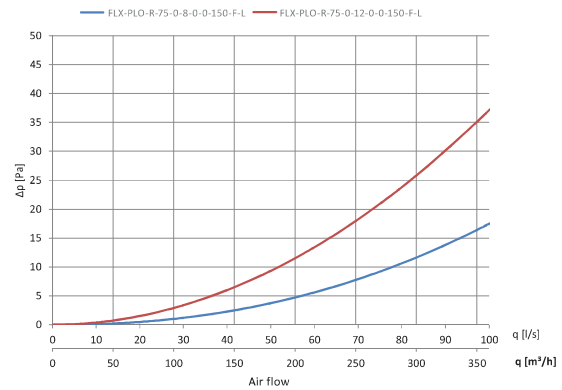
**FLX-PLO-R-75-7-0-7-0-d1**



**FLX-PLO-R-75-2-4-2-0-d1**



**FLX-PLO-R-75-0-8-0-0-150-F-L / FLX-PLO-R-75-0-12-0-0-150-F-L**



## Horizontal distribution box for FLX-REKU system

# FLX-PLO-R-P



### Description

The FLX-PLO-R-P/FLX-PRO-R-P distribution boxes (manifolds) are used to run the domestic ventilation ductwork to each individual room. The air distribution box is equipped with a perforated panel, which is intended for even airflow distribution. As a rule, one air distribution box with a proper amount of FLX duct connection spigots is installed in the supply and exhaust air. However, the number of air distribution boxes depends on the building design. The  $\varnothing d_1$  connection spigot is used to connect the main supply or exhaust duct from the heat recovery unit. FLX-HDPE / FLX-HDPE-A ducting is connected to  $\varnothing d_2$  connection spigots.

FLX-PLO-R-P / FLX-PRO-R-P distribution boxes are made of galvanized steel sheet. Air distribution boxes made from stainless steel are available on request.

Available also insulated distribution box version - FLX-PLI-R-P / FLX-PRI-R-P. These distribution boxes have inside a insulation lining made from 9 mm thick rubber foam.

FLX-PLO-R-P distribution boxes are equipped with duct connection spigots  $\varnothing d_2$  with a EPDM seal – this type of connection with FLX-HDPE ducting is airtight and easy to install.



FLX-CF-PVC end caps fit duct connection spigots  $\varnothing d_2$  of FLX-PLO-R-P and FLX-PRO-R-P distribution boxes.

#### Product code example

Product code **FLX-PRO-R-P - 75 - 2x10 - 200 -**

type

diameter  $\varnothing d_2$

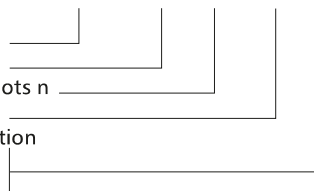
number of spigots n

diameter  $\varnothing d_1$

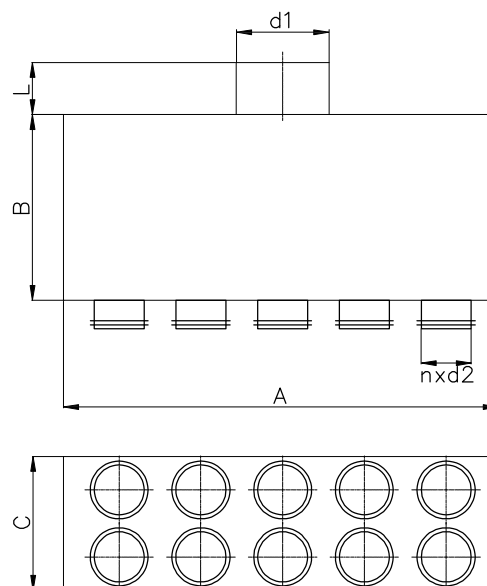
type of connection

male

F - female



### Dimensions



Product code	A [mm]	B [mm]	C [mm]	L [mm]	$d_1$ [mm]	n [pcs.]	$d_2$ [mm]
FLX-PRO-R-P-63-2x5-d1	500	180	230	60	80-250	10	63
FLX-PRO-R-P-63-2x6-d1	600	180	230	60	80-250	12	63
FLX-PRO-R-P-63-2x7-d1	700	180	230	60	80-250	14	63
FLX-PLO-R-P-75-2x5-d1	500	180	230	60	80-250	10	63
FLX-PLO-R-P-75-2x6-d1	600	180	230	60	80-250	12	63
FLX-PLO-R-P-75-2x7-d1	700	180	230	60	80-250	14	63
FLX-PLO-R-P-90-2x5-d1	500	180	230	60	80-250	10	75
FLX-PLO-R-P-90-2x6-d1	600	180	230	60	80-250	12	75
FLX-PLO-R-P-90-2x7-d1	700	180	230	60	80-250	14	75

Duct connection spigot  $d_1$ : 80, 100, 125, 150, 160, 180, 200, 250 mm.

#### Choose distribution box according to number of spigots:

FLX-HDPE $\varnothing$ [mm]	No of FLX duct connection spigots n [pcs.]	Product code of distribution box
63	10	FLX-PRO-R-P-63-2x5-d1
	12	FLX-PRO-R-P-63-2x6-d1
	14	FLX-PRO-R-P-63-2x7-d1
75	10	FLX-PLO-R-P-75-2x5-d1
	12	FLX-PLO-R-P-75-2x6-d1
	14	FLX-PLO-R-P-75-2x7-d1
90	10	FLX-PLO-R-P-90-2x5-d1
	12	FLX-PLO-R-P-90-2x6-d1
	14	FLX-PLO-R-P-90-2x7-d1