



**OWNER'S
MAINTENANCE
AND ADJUSTMENT
GUIDELINES**

BALCONY DOORS - STANDARD HINGES

October 2020

Recommended Maintenance Schedule For VETTA Balcony Doors

General Guidelines

Regular cleaning and maintenance will help to keep the beauty and prolong the functionality of your balcony doors. Adjust your doors as required.

Salt and other corrosive or abrasive materials must not be allowed to build up on the exterior surfaces or components. Any damage to the exterior surfaces, such as scratches, chips or abrasions can result in corrosion and should be repaired.

*At no time should a pressure washer be used to clean balcony doors.

Cleaning Glass

- **As required**

Use a mild, ph-neutral cleaning product with a clean soft cloth and/or squeegee. Outside reflexive surfaces must not be cleaned with any caustic or alkaline substances or cleaning powders, as they will damage the surface.

Cleaning, Maintaining and Lubricating Hardware

- **Once a year**

If necessary, tighten any loose screws and replace any defective parts.

Lubrication: (See below for instructions)

For difficult to operate units, it is most likely a hardware adjustment issue. Please consult the diagrams below for adjustments. If you continue to have problems, contact us and we will be happy to give you some guidance.

Cleaning Wood Frames and Aluminum Cladding

- **Twice a year, preferably spring and fall**

During cleaning the outdoor temperature should not exceed 25°C.

Aluminum surfaces should be thoroughly cleaned using a mild or slightly alkaline cleaning product and warm water (not hot). Remove any buildup around the silicone seal at the perimeter of the glass.

Immediately wipe the surface with clean, cold water. Then dry thoroughly

Wood frames can be cleaned with a soft cloth which is slightly damp with water. Dry with a soft cloth.

Avoid abrasive cleaners or pads as these can damage the finish on the aluminum or wood.

Cleaning Thresholds

- **As required**

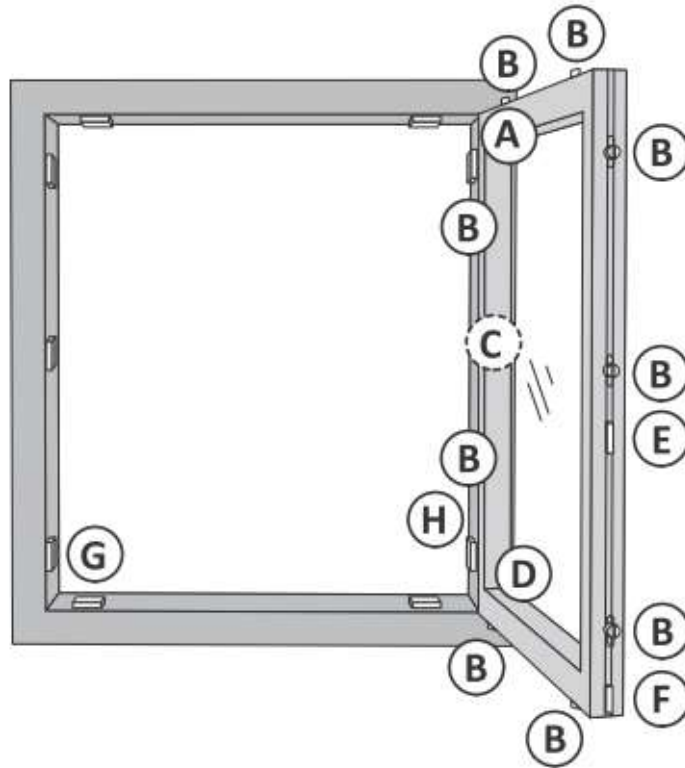
Keep dirt and debris off the thresholds, as this can damage the weather stripping. Vacuum excess material from the threshold as needed, and wipe clean with a damp rag. If the door is rubbing the threshold there may be debris stuck under the door, or it could need adjustment.

Cleaning and Maintaining Gaskets

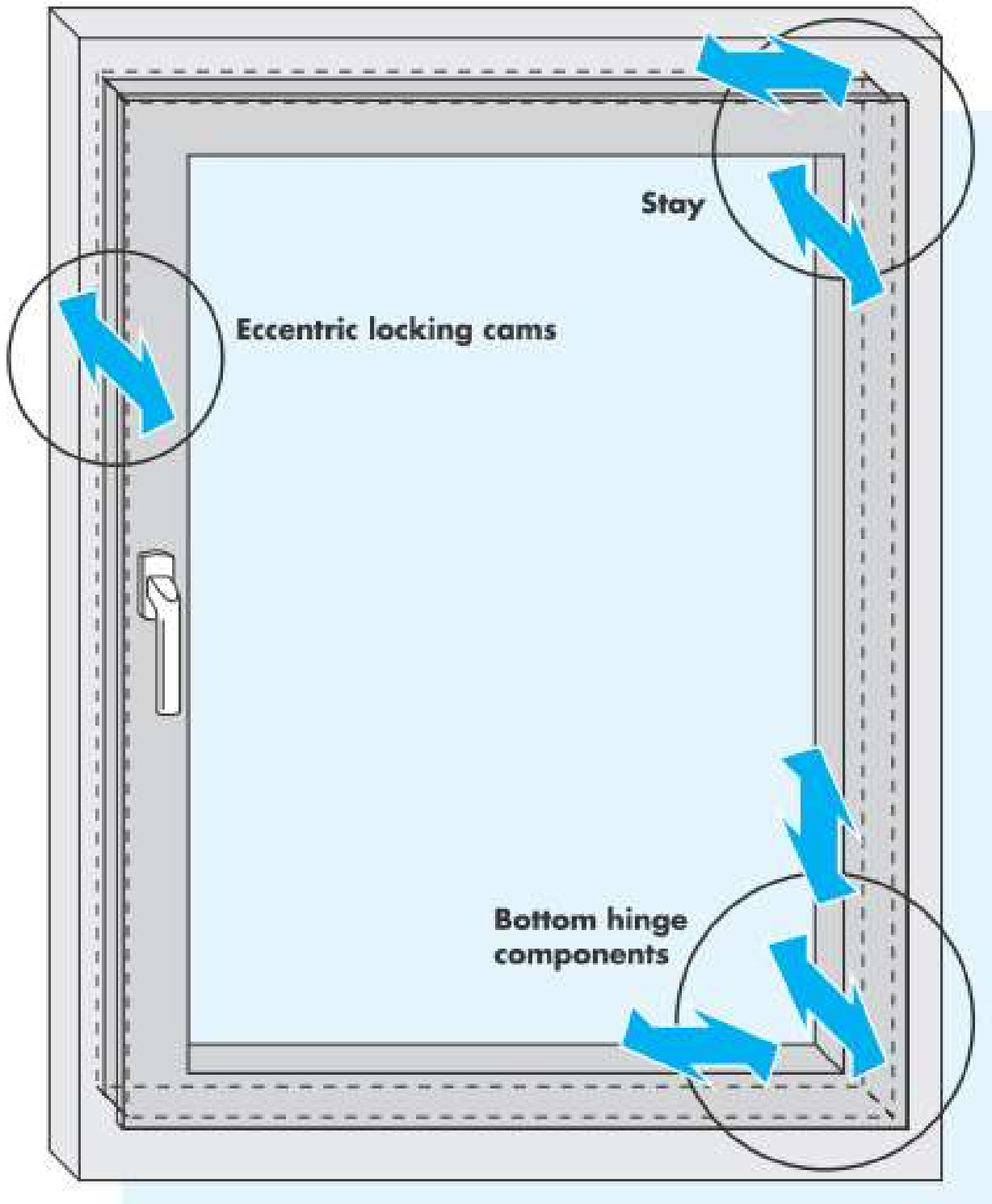
- **Once a year**

Clean gaskets will ensure that the sash seals tightly to the frame. Using mild soap and warm water (not hot), clean the gaskets and dry thoroughly. You can re-dress the gaskets with a silicone spray, but be sure to apply this to the rag rather than the gasket directly, as any overspray can affect the finish. Gaskets should be replaced if damaged.

Making Adjustments

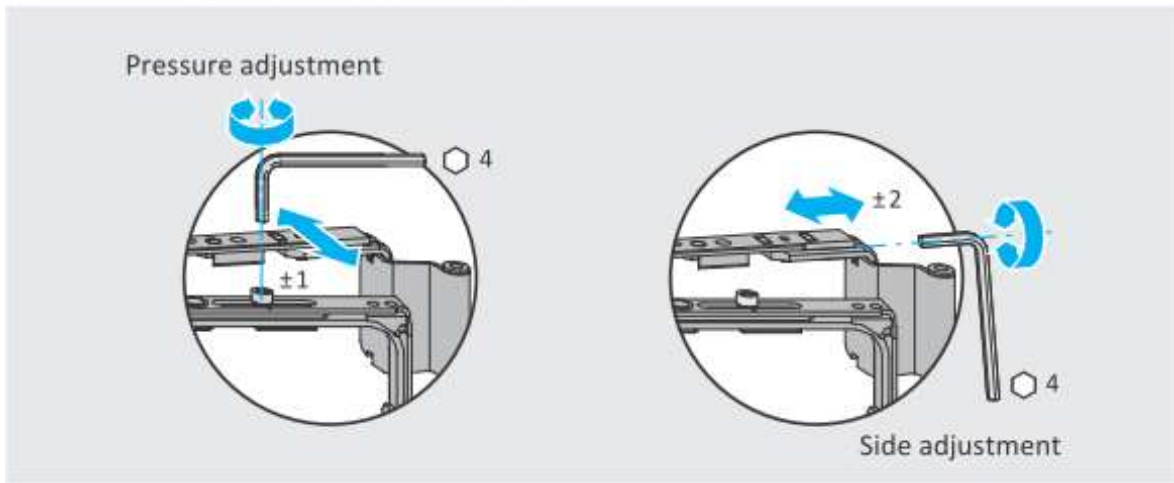


- (A)** Stay and top hinge (Regulates the angle of the sash)
- (B)** Locking point (Regulates the pressure on the frame and adjusts the ease of operation of the handle)
- (C)** Tilt sash hinge (only for tilt sash) (N/A)
- (D)** Corner hinge - rebate corner hinge - bottom hinge (Regulates height of the sash)
1. Bottom Frame Hinge 2. Bottom Sash Hinge
- (E)** Door snapper (Option: For balcony doors without an external handle)
- (F)** Sash lift (No adjustment)
- (G)** Run-up (No adjustment)
- (H)** Load Transfer (Adjustments on hidden hinges only - adjusts the height and the load of the sash)



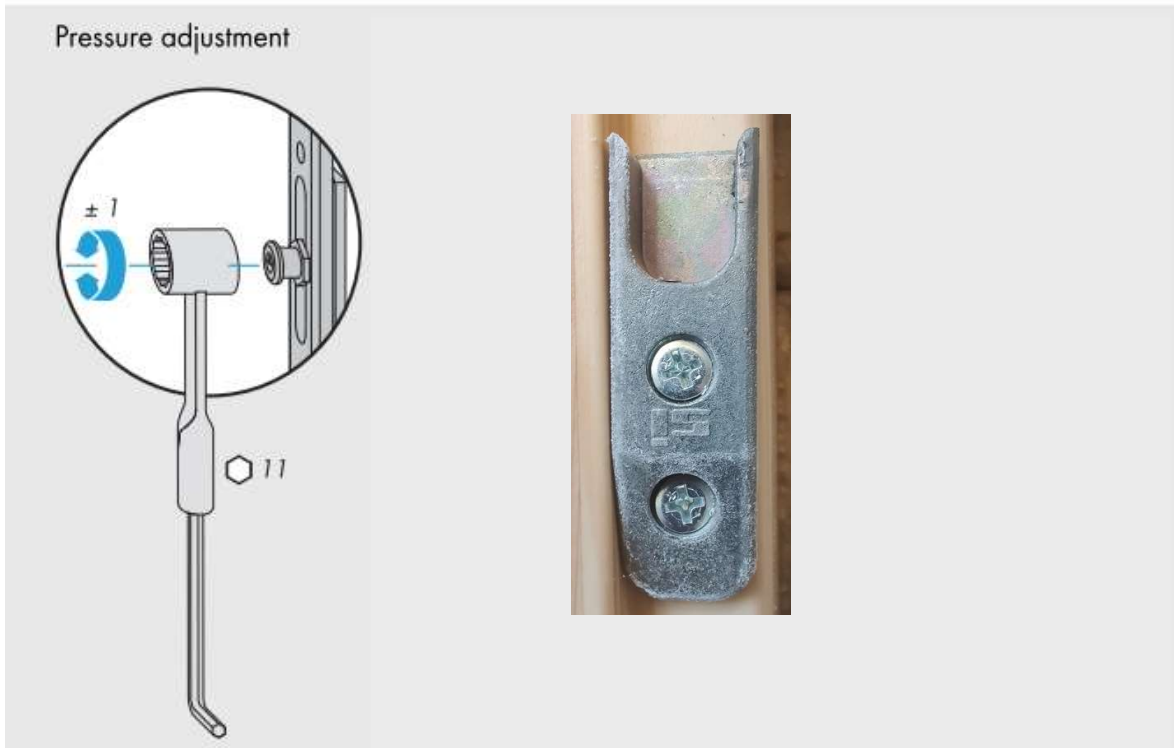
A Stay **Standard Hinge**

TITAN iP, AF - Hinge side TITAN/Si-line



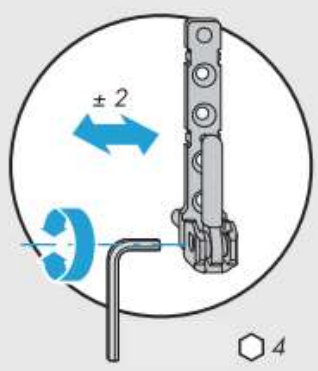
B Locking point

TITAN iP, AF - comfort mushrooms



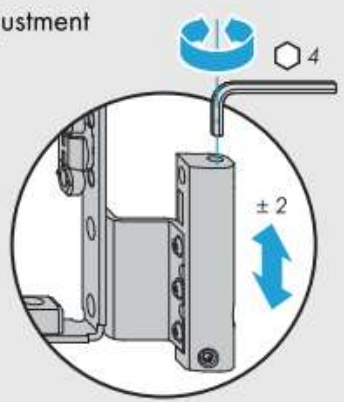
D 1. Bottom Frame Hinge

Side adjustment

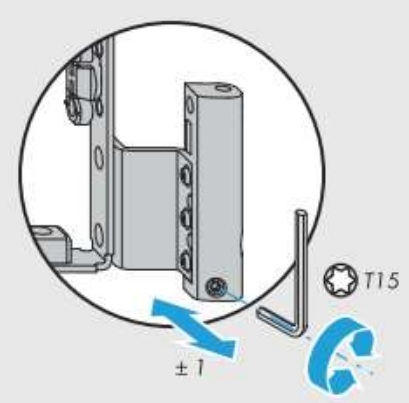


2. Bottom Sash Hinge

Height adjustment

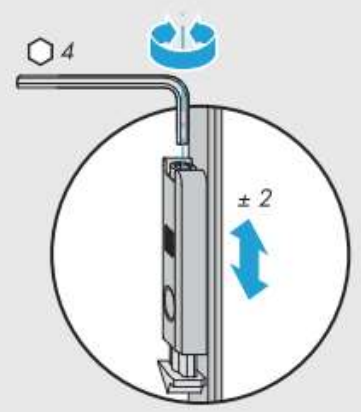


Pressure adjustment



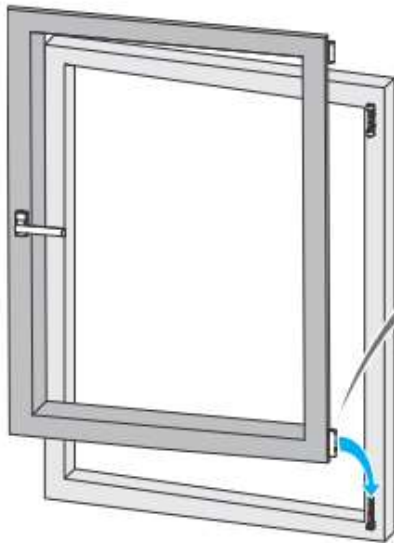
E Snapper

Height adjustment



Installing and Removing the Window Sash

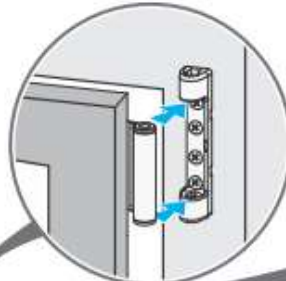
Install the window sash



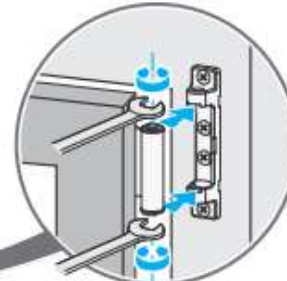
1.



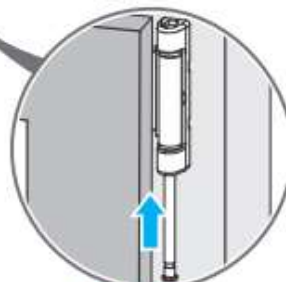
2. a



2. b



3.



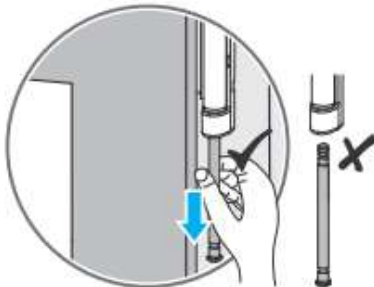
CAUTION: SASH CAN BE HEAVY

a = Hinge side TITAN
Insertion of the top hinge pin at 0° or 60° opening position.

b = Hinge side Si-line
Note the orientation of the bushes relative to the top hinge - upper and lower sleeve must be parallel.



Remove the window sash

Remove it in the reverse order.
Please note:



Lubrication of Your Siegenia Hardware

To ensure smooth and trouble free operation of your hardware you must carry out the following maintenance at least once a year.

1. Lubricate or oil all moving parts and locking points .
2. Use **only** clean and non-resinous grease or oil (i.e. 3in1).
3. Check all important security components  for loose connections and wear. If necessary, tighten any loose screws and replace any defective parts.

