

Plenum boxes FLX-PRO...



Description

FLX-PRO plenum boxes are connecting pieces for FLX-HDPE and FLX-HDPE-A flexible ducts, which form a distribution system for mechanical installations, including recuperator systems. Due to small size, they do not require a lot of space or special installation. This allows to save more usable interior space. FLX-PRO plenum boxes are made of galvanized steel. On special request, it is possible to make the plenum boxes using stainless steel.

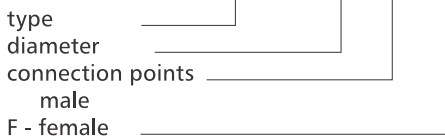
It is possible to order insulated FLX-PRI plenum boxes. Plenum boxes are inside insulated with technical insulation with thickness of 9mm. Weldings are made outside the plenum boxes. To preserve the tightness class C it is recommended to use gasket FLX-USZ or FLX-USC.

Note:

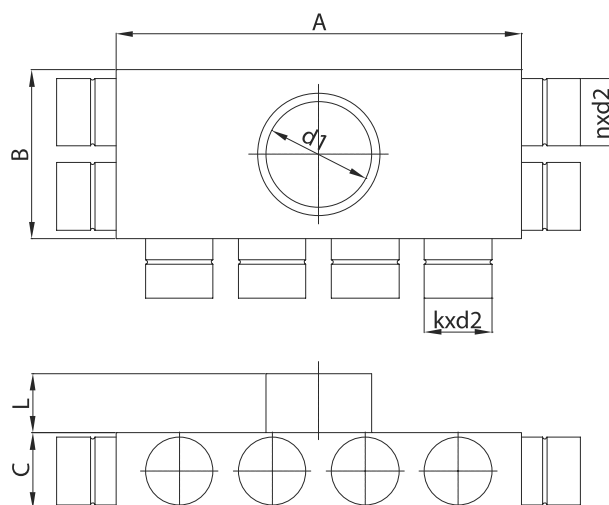
Standard diameter d_1 is made as nippel. On special request diameter d_1 can be made as female dimension. For this purpose it must be added "F" at the end to the index.

Example

Product code **FLX-PRO - 75 - 2-4-2**



Dimensions

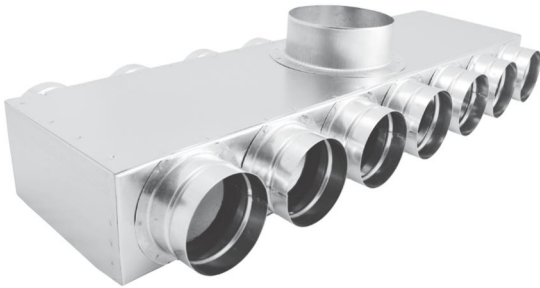


code	A [mm]	B [mm]	C [mm]	L [mm]	d1 [mm]	n [szt]	k [szt]	d2 [mm]
FLX-PRO-63-2-4-2	360	180	75	60	160	4	4	63
FLX-PRO-63-3-6-3	540	270	75	60	200	6	6	63
FLX-PRO-75-2-4-2	400	200	90	60	160	4	4	75
FLX-PRO-75-3-6-3	600	300	90	60	200	6	6	75
FLX-PRO-90-2-4-2	480	240	110	60	160	4	4	90
FLX-PRO-90-3-6-3	720	360	110	60	200	6	6	90



Version of plenum box FLX-PLO-.... (ensures tightness class C without additional sealing)
Take-off 63 mm with gasket EPDM matches FLX-HDPE-75 (only system 75)
male connector for Spiral duct- from 125 to 250 -also with gasket EPDM

Plenum boxes FLX-PRO...



Description

FLX-PRO plenum boxes are connecting pieces for FLX-HDPE and FLX-HDPE-A flexible ducts, which form a distribution system for mechanical installations, including recuperator systems. Due to small size, they do not require a lot of space or special installation. This allows to save more usable interior space. FLX-PRO plenum boxes are made of galvanized steel. On special request, it is possible to make the plenum boxes using stainless steel.

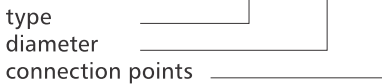
It is possible to order insulated FLX-PRI plenum boxes. Plenum boxes are inside insulated with technical insulation with thickness of 9mm. Weldings are made outside the plenum boxes. To preserve the tightness class C it is recommended to use gasket FLX-USZ or FLX-USC.

Note:

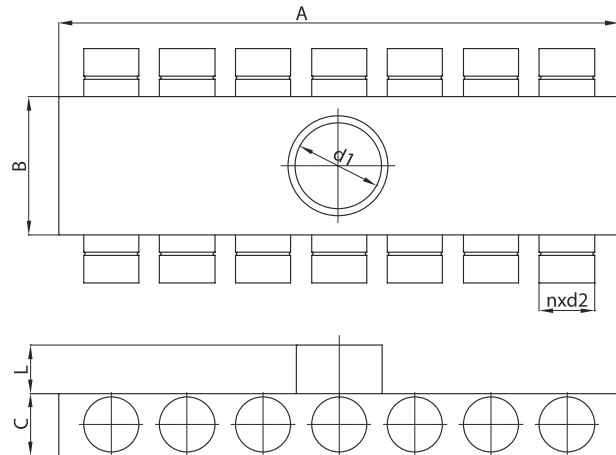
Standard diameter d_1 is made as nippel. On special request diameter d_1 can be made as female dimension. For this purpose it must be added "F" at the end to the index.

Example

Product code **FLX-PRO - 75 - 7-7**



Dimensions



code	A [mm]	B [mm]	C [mm]	L [mm]	d1 [mm]	n [szt]	d2 [mm]
FLX-PRO-63-3-3	270	270	75	60	125	6	63
FLX-PRO-75-3-3	300	300	90	60	125	6	75
FLX-PRO-90-3-3	360	360	110	60	160	6	90
FLX-PRO-63-4-4	360	360	75	60	160	8	63
FLX-PRO-75-4-4	400	400	90	60	160	8	75
FLX-PRO-90-4-4	480	480	110	60	200	8	90
FLX-PRO-63-5-5	450	450	75	60	160	10	63
FLX-PRO-75-5-5	500	500	90	60	200	10	75
FLX-PRO-90-5-5	600	600	110	60	200	10	90
FLX-PRO-63-7-7	630	280	75	60	200	14	63
FLX-PRO-75-7-7	700	300	90	60	200	14	75
FLX-PRO-90-7-7	840	360	110	60	200	14	90



Version of plenum box FLX-PLO-.... (ensures tightness class C without additional sealing)
Take-off 63 mm with gasket EPDM matches FLX-HDPE-75 (only system 75)
male connector for Spiral duct- from 125 to 250 -also with gasket EPDM

Plenum boxes FLX-PRO...



Description

FLX-PRO plenum boxes are connecting pieces for FLX-HDPE and FLX-HDPE-A flexible ducts, which form a distribution system for mechanical installations, including recuperatory stems. Due to small size, they do not require a lot of space or special installation. This allows to save more usable interior space. FLX-PRO plenum boxes are made of galvanized steel. On special request, it is possible to make the plenum boxes using stainless steel.

It is possible to order insulated FLX-PRI plenum boxes. Plenum boxes are inside insulated with technical insulation with thickness of 9mm. Weldings are made outside the plenum boxes. To preserve the tightness class C it is recommended to use gasket FLX-USZ or FLX-USC.

Note:

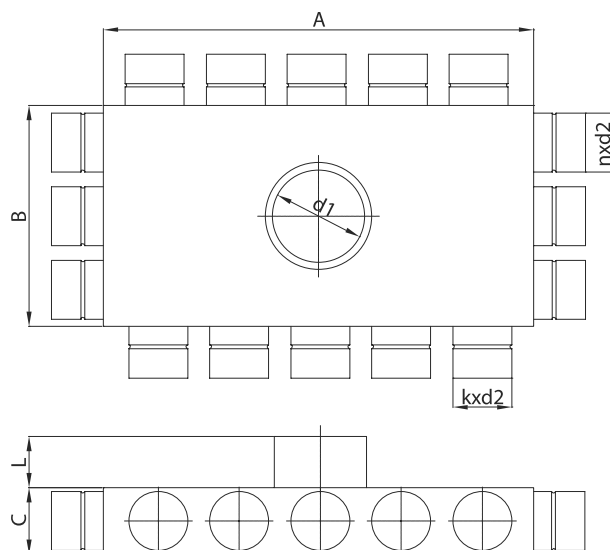
Standard diameter d_1 is made as nippel. On special request diameter d_1 can be made as female dimension. For this purpose it must be added "F" at the end to the index.

Example

Product code **FLX-PRO - 75 - 3-5-3-5**



Dimensions



code	A [mm]	B [mm]	C [mm]	L [mm]	d1 [mm]	n [szt]	k [szt]	d2 [mm]
FLX-PRO-63-3-5-3-5	450	270	75	60	200	6	10	63
FLX-PRO-63-3-6-3-6	540	270	75	60	200	6	12	63
FLX-PRO-75-3-5-3-5	500	300	90	60	200	6	10	75
FLX-PRO-75-3-6-3-6	600	300	90	60	200	6	12	75
FLX-PRO-90-3-5-3-5	600	360	110	60	200	6	10	90
FLX-PRO-90-3-6-3-6	720	360	110	60	200	6	12	90



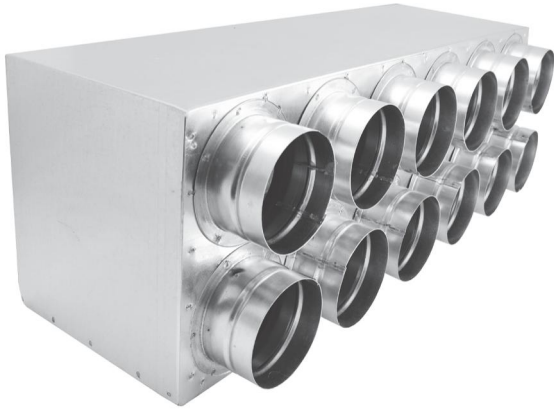
Version of plenum box FLX-PLO-.... (ensures tightness class C without additional sealing)

Take-off 63 mm with gasket EPDM matches FLX-HDPE-75 (only system 75)

male connector for Spiral duct - from 125 to 250 -also with gasket EPDM

Plenum boxes FLX-PRO-P...

PRO version, tubes fit inside, female version



Description

FLX-PRO-P plenum boxes are connecting pieces for FLX-HDPE and FLX-HDPE-A flexible ducts, which form a distribution system for mechanical installations, including recuperator systems.

Due to small size, they do not require a lot of space or special installation. This allows to save more usable interior space. FLX-PRO plenum boxes are made of galvanized steel.

On special request, it is possible to make the plenum boxes using stainless steel.

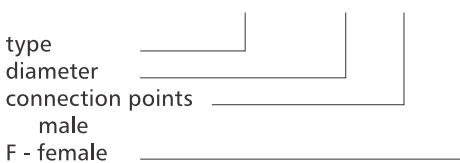
It is possible to order insulated FLX-PRI-P plenum boxes. Plenum boxes are inside insulated with technical insulation with thickness of 9mm. Weldings are made outside the plenum boxes. To preserve the tightness class C it is recommended to use gasket FLX-USZ or FLX-USC.

Note:

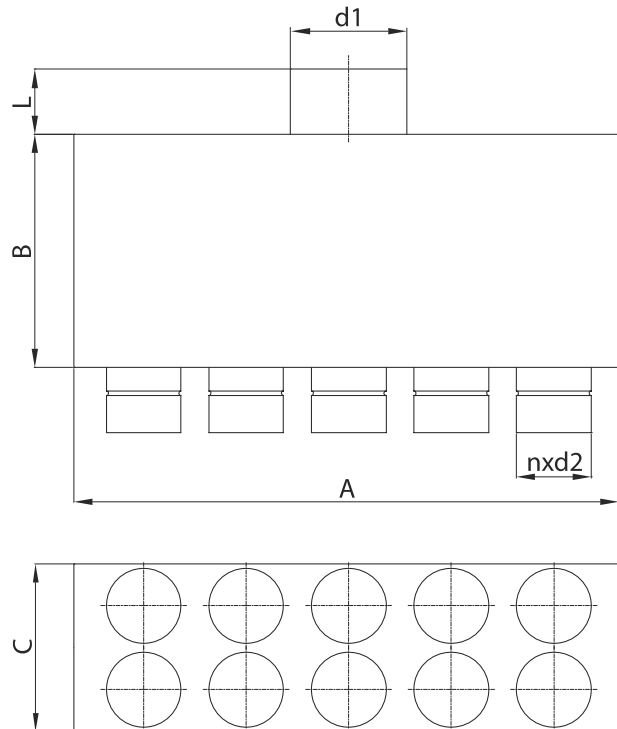
Standard diameter d_1 is made as nippel. On special request diameter d_1 can be made as female dimension. For this purpose it must be added "F" at the end to the index.

Example

Product code **FLX-PRO-P - 75 - 10**



Dimensions



code	A [mm]	B [mm]	C [mm]	L [mm]	d1 [mm]	n [szt.]	d2 [mm]
FLX-PRO-P-63-10	450	160	220	60	200	10	63
FLX-PRO-P-63-12	540	160	220	60	200	12	63
FLX-PRO-P-63-14	630	160	220	60	200	14	63
FLX-PRO-P-75-10	500	180	230	60	200	10	75
FLX-PRO-P-75-12	600	180	230	60	200	12	75
FLX-PRO-P-75-14	700	180	230	60	200	14	75
FLX-PRO-P-90-10	600	200	240	60	200	10	90
FLX-PRO-P-90-12	720	200	240	60	200	12	90
FLX-PRO-P-90-14	840	200	240	60	200	14	90

PLO version is a male connector



Version of plenum box FLX-PLO-.... (ensures tightness class C without additional sealing)

Take-off 63 mm with gasket EPDM matches FLX-HDPE-75 (only system 75)

male connector for Spiral duct- from 125 to 250 -also with gasket EPDM