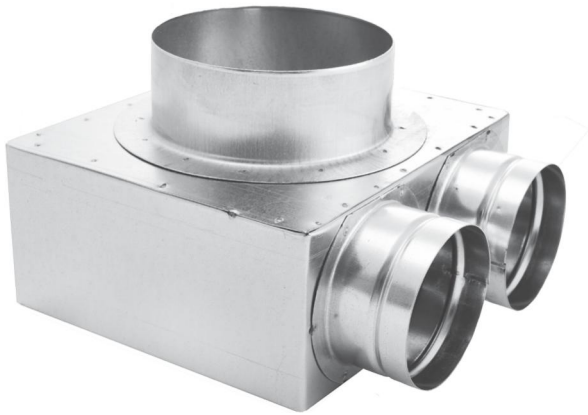


# Plenum boxes FLX-PRO...



## Description

FLX-PRO plenum boxes are connecting pieces for FLX-HDPE and FLX-HDPE-A flexible ducts, which form a distribution system for mechanical installations, including recuperator systems. Due to small size, they do not require a lot of space or special installation.

This allows to save more usable interior space.

FLX-PRO plenum boxes are made of galvanized steel.

On special request, it is possible to make the plenum boxes using stainless steel.

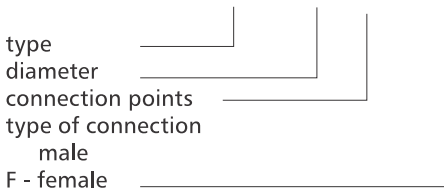
It is possible to order insulated FLX-PRI plenum boxes. Plenum boxes are inside insulated with technical insulation with thickness of 9mm. Weldings are made outside the plenum boxes. To preserve the tightness class C it is recommended to use gasket FLX-USZ or FLX-USC.

### Note:

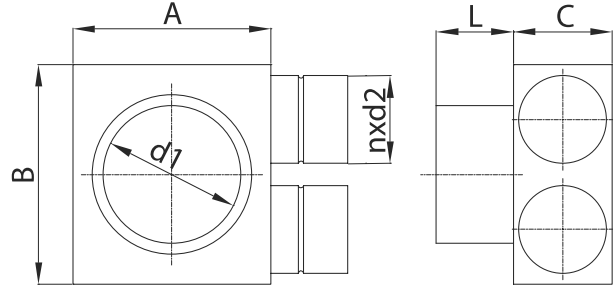
Standard diameter  $d_1$  is made as nipple. On special request diameter  $d_1$  can be made as female dimension. For this purpose it must be added "F" at the end to the index.

### Example

Product code **FLX-PRO - 75 - 2**



## Dimensions



code	A [mm]	B [mm]	C [mm]	L [mm]	d1 [mm]	n [szt.]	d2 [mm]
FLX-PRO-63-1	180	180	75	60	80	1	63
FLX-PRO-63-2	180	180	75	60	125	2	63
FLX-PRO-63-3	180	270	75	60	125	3	63
FLX-PRO-75-1	180	200	90	60	80	1	75
FLX-PRO-75-2	180	200	90	60	125	2	75
FLX-PRO-75-3	180	300	90	60	125	3	75
FLX-PRO-90-1	200	240	110	60	100	1	90
FLX-PRO-90-2	200	240	110	60	125	2	90
FLX-PRO-90-3	200	360	110	60	125	3	90



Version of plenum box FLX-PLO-.... (ensures tightness class C without additional sealing)

Take-off 63 mm with gasket EPDM matches FLX-HDPE-75 (only system 75)

male connector for Spiral duct- from 125 to 250 -also with gasket EPDM