

Sleeve couplings **FLX-MSF...**



Description

FLX-MSF sleeve coupling is used to connect FLX-HDPE or FLX-HDPE-A ducts.

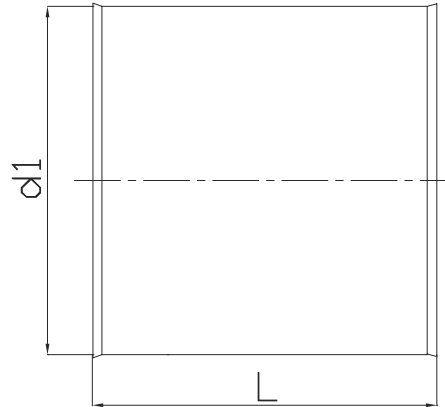
To preserve the tightness class C it is recommended to use gasket FLX-USZ or FLX-USC.

Example

Product code: **FLX-MSF - 75**

type _____
diameter _____

Dimensions



<i>code</i>	<i>d1</i> [mm]	<i>L</i> [mm]
FLX-MSF-63	63	100
FLX-MSF-75	75	100
FLX-MSF-90	90	100

Gaskets

FLX-USZ...



Description

Gaskets are used for elements of the FLX-REKU cable connections FLX-HDPE to other system components such plenum boxes, female coupling, take-offs, dampers.

FLX-USZ-75 / FLX-USZ-90 - made of EPDM rubber is used for sealing the two ducts and female coupling - provides tightness class C acc. BS EN 12237.

FLX-USP-75 / FLX-USP-90 - made of foam and nozzle is mounted inside the take-offs of plenum boxes and dampers. It is used to seal the box with duct - provides tightness class B acc. BS EN 12237.

FLX-USC-75 / FLX-USC-90 - made of EPDM rubber and is mounted on the ends of the duct FLX-HDPE. It is used to seal the duct with plenum box, damper - provides tightness class C acc. BS EN 12237.

FLX-UST-75 / FLX-UST-90 - seal shrink tubing, used to connect and seal two ducts or duct and plenum box.

Example

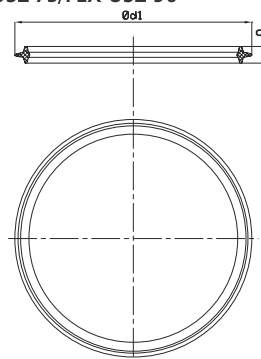
Product code: **FLX-USZ - 75**

type
 diameter

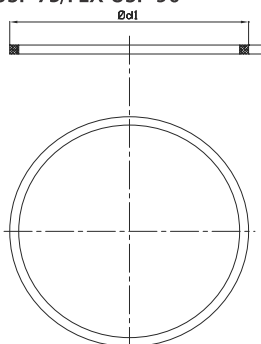
<i>kod</i>	<i>d1</i> [mm]	<i>g</i> [mm]
FLX-USZ-75	78	8
FLX-USP-75	75	6
FLX-USC-75	77	3
FLX-UST-75	75	100
FLX-USZ-90	93	8
FLX-USP-90	90	6
FLX-USC-90	92	3
FLX-UST-90	90	100

Dimensions

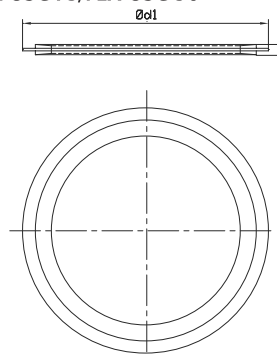
FLX-USZ-63/FLX-USZ-75/FLX-USZ-90



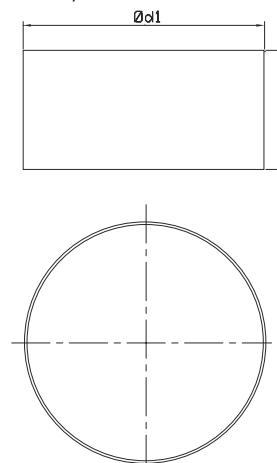
FLX-USP-63/FLX-USP-75/FLX-USP-90



FLX-USC-63/FLX-USC-75/FLX-USC-90



FLX-UST-63/FLX-UST-75/FLX-UST-90



Caps

FLX-CS-PVC/FLX-CF-PVC



Description

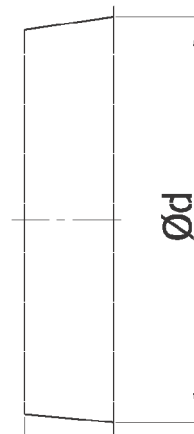
CS-PVC hole plug are dedicated stops for FLX-HDPE and FLX-HDPE-A ducts. FLX-CS plugs are made of PVC plastic.

Example

Product code: **CS-PVC - 75**

type _____
 diameter _____

Dimensions



code	d ₁ [mm]	d ₂ [mm]	L [mm]	aplication
FLX-CS-PVC-63	51	49	20	mounted inside the ducts: FLX-HDPE-63, FLX-HDPE-A-63
FLX-CF-PVC-63	66	63	20	mounted inside the take-offs of plenum boxes FLX-...-63
FLX-CS-PVC-75	63	59	20	mounted inside the ducts: LX-HDPE-75, FLX-HDPE-A-75
FLX-CF-PVC-75	78	78	20	mounted inside the take-offs of plenum boxes FLX-...-75
FLX-CS-PVC-90	76	74	20	mounted inside the ducts: FLX-HDPE-90, FLX-HDPE-A-90
FLX-CF-PVC-90	95	91	20	mounted inside the take-offs of plenum boxes FLX-...-90